

UCLA

MILDRED E. MATHIAS
BOTANICAL
GARDEN

The UCLA Mildred E. Mathias Botanical Garden is a living museum of plants right here in Los Angeles!

It is free to visit, so come back with friends and family to explore even more. You are on your way to becoming a scientist as you continue to make observations and take note of what you see.

Plan your visit or support free educational programs on our website: botgard.ucla.edu



Treat all beings with respect.

Use your eyes to observe insects, but not your hands. Some insects are delicate and can be hurt by your touch. Some insects can bite or sting you to protect themselves.

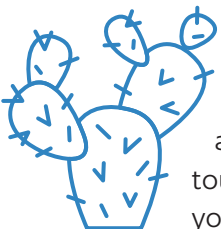
UCLA

MILDRED E. MATHIAS
BOTANICAL
GARDEN

The UCLA Mildred E. Mathias Botanical Garden is a living museum of plants right here in Los Angeles!

It is free to visit, so come back with friends and family to explore even more. You are on your way to becoming a scientist as you continue to make observations and take note of what you see.

Plan your visit or support free educational programs on our website: botgard.ucla.edu



Treat all beings with respect.

Use your eyes to observe insects, but not your hands. Some insects are delicate and can be hurt by your touch. Some insects can bite or sting you to protect themselves.



's

your name

Insect Explorer Notebook



Explorer Tip: use this handy ruler to measure the size of insects, leaves, and flowers you find!



's

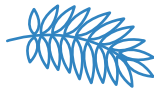
your name

Insect Explorer Notebook



Explorer Tip: use this handy ruler to measure the size of insects, leaves, and flowers you find!

**What are 4 colors you observe?
Where did you see each color?**



- 1.
- 2.
- 3.
- 4.

Draw an insect that you find.

How many legs and wings does it have?
What do the eyes look like? Is it on a plant?

Insect I found:

Do you see any plants that the insects like to visit? Draw and describe some of them!

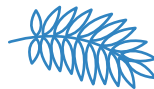
Plants that I observed an insect visit:

Why should we protect insects and plants? Why are they important to people & the environment?

Why I love and protect insects + plants:



**What are 4 colors you observe?
Where did you see each color?**



- 1.
- 2.
- 3.
- 4.

Draw an insect that you find.

How many legs and wings does it have?
What do the eyes look like? Is it on a plant?

Insect I found:

Do you see any plants that the insects like to visit? Draw and describe some of them!

Plants that I observed an insect visit:

Why should we protect insects and plants? Why are they important to people & the environment?

Why I love and protect insects + plants:

